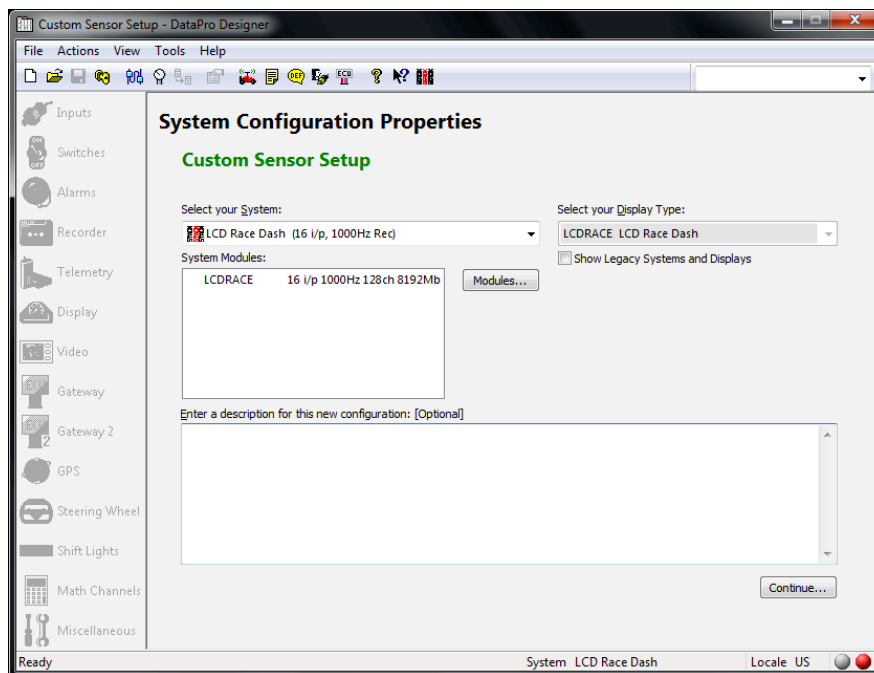


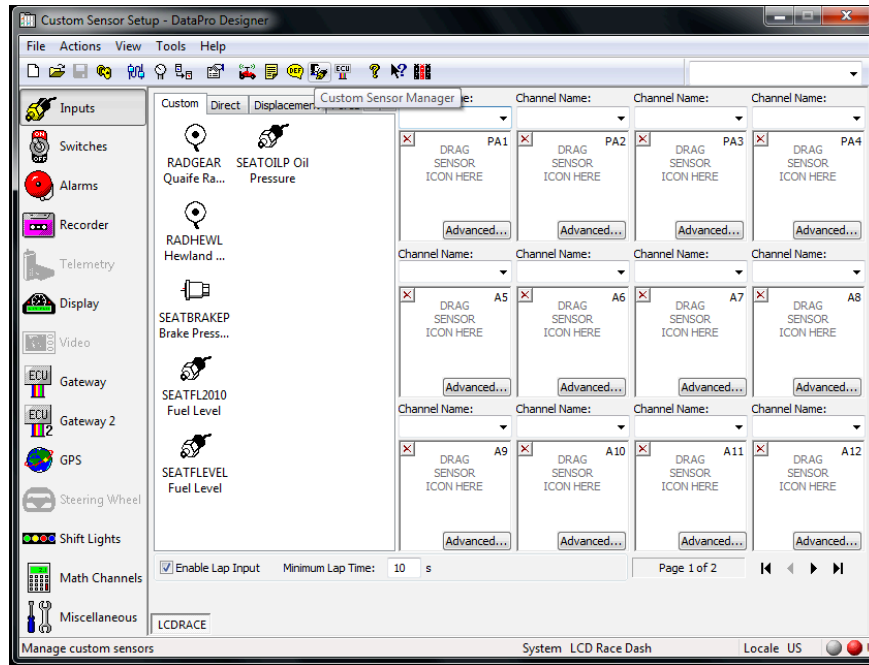
Configuring a Custom Sensor Profile in DataPro Designer

Setting up a custom sensor input in DataPro allows the data logger to be configured to an existing sensor or 3rd party sensor. This document will detail the process for creating a custom sensor profile in Stack DataPro Designer and setting the custom sensor to a specified input channel. Note: This document assumes that you have already installed the Stack hardware in your vehicle per the included instructions and have authorized your hardware in a previous version of DataPro.

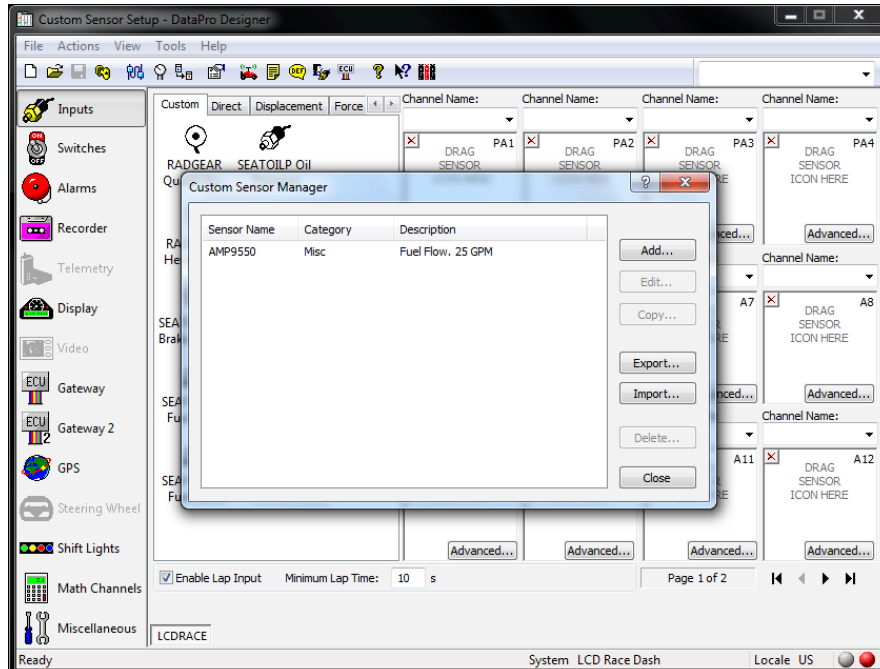
1.) Open DataPro Designer and start or load a configuration for the your data logger.



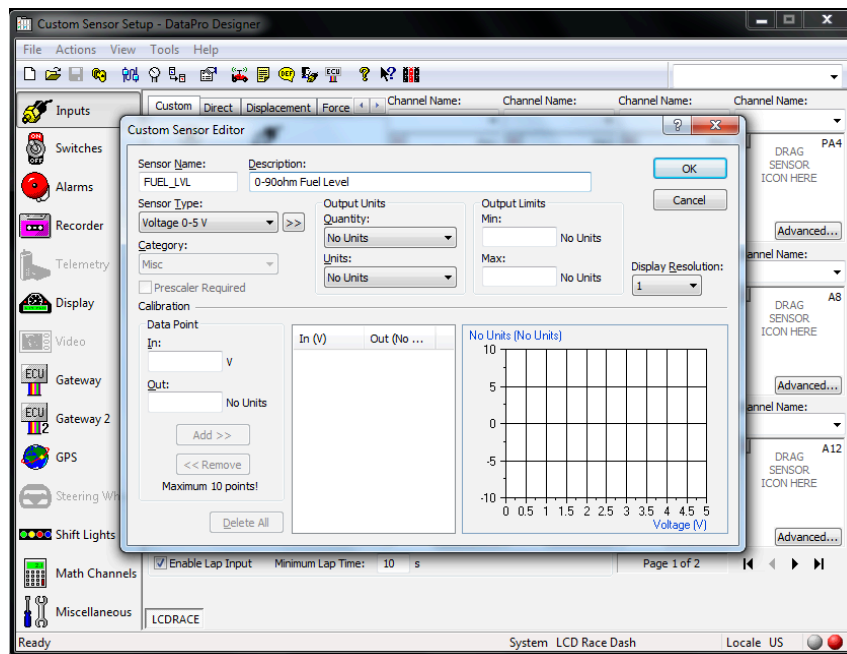
- 2.) Select the Custom Sensor Manager icon on the top of the DataPro Designer window or from the Tools drop-down menu.



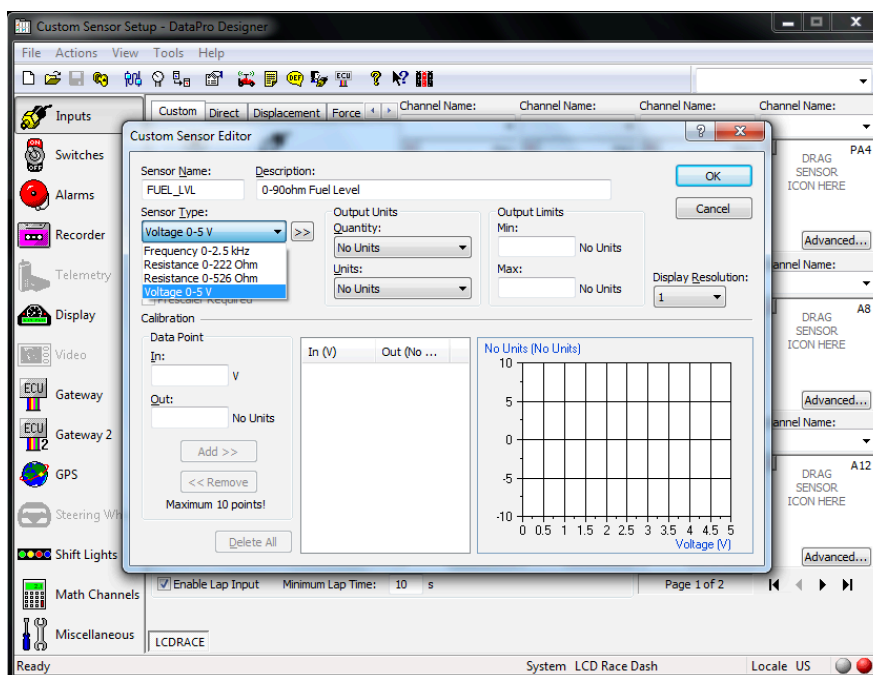
- 3.) Click the Add button to create a new sensor profile. Select Edit if you would like to edit an existing sensor profile.



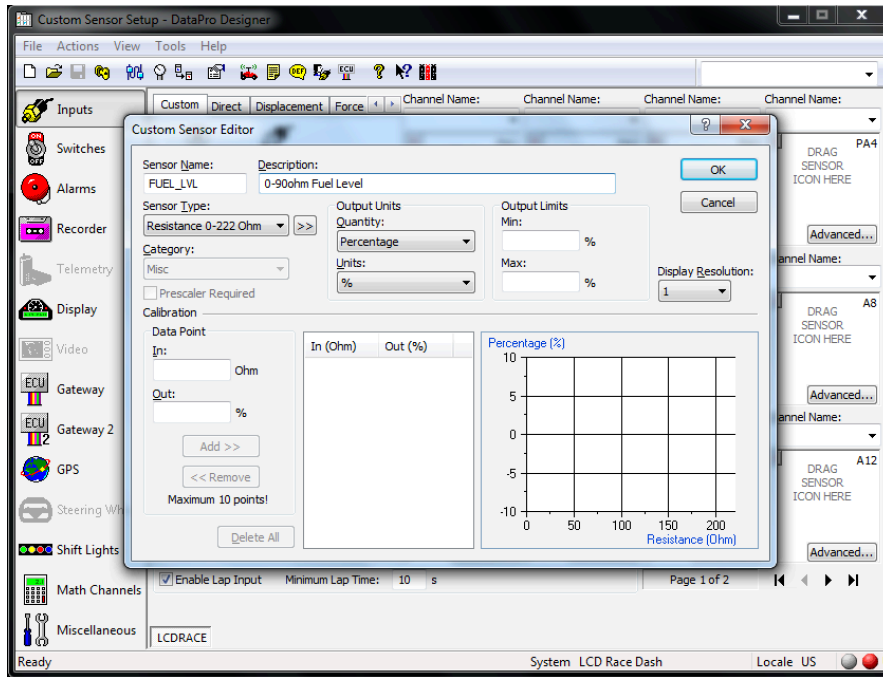
4.) Type a sensor name and a description for your sensor.



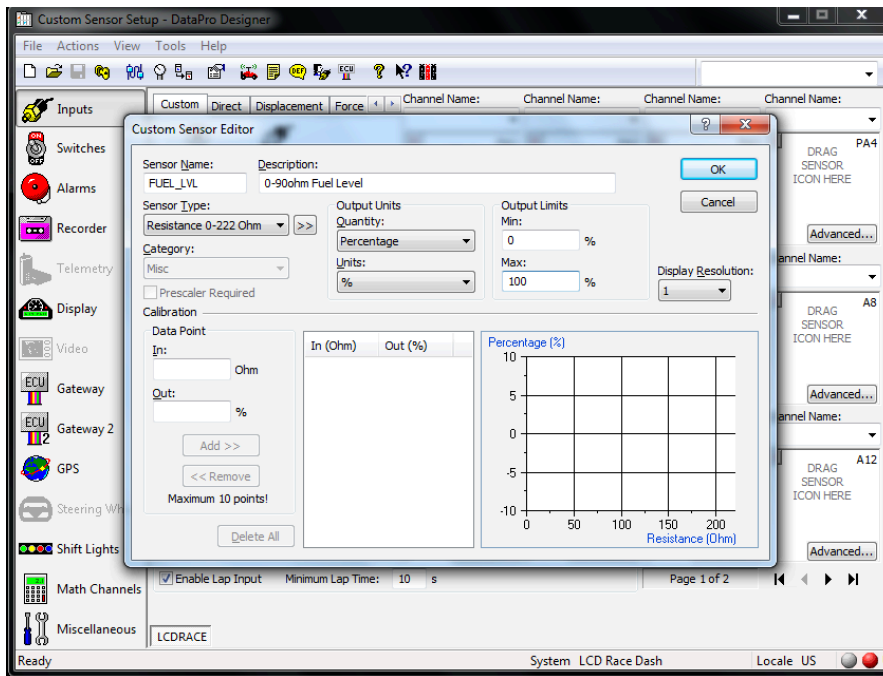
5.) Select the sensor type. This will be the type of signal coming from the sensor – 0-5v, 0-222 Ohm, 0-526 Ohm, or 0-2.5 kHz.



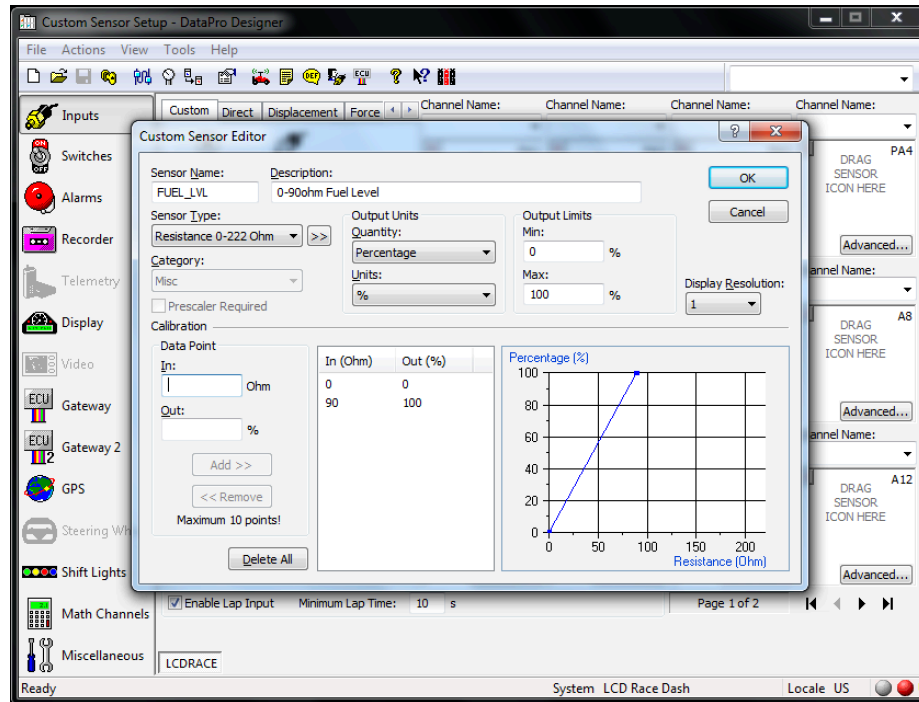
6.) Select the Quantity and Units that correspond with the signal



7.) Select the sensor output min and maximum values, typically referred to as the scale. Select the display value resolution that is appropriate.

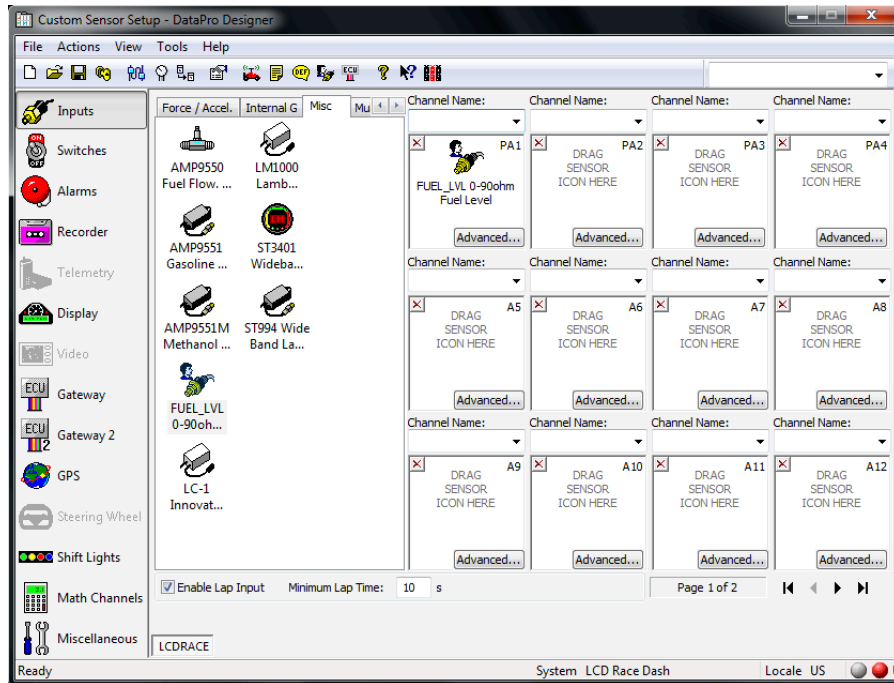


8.) To enter a data point, input the value and the value's output. You must plot at least 2 points. Plotting more than 2 points allows you to create a curve in the sensor's scale.

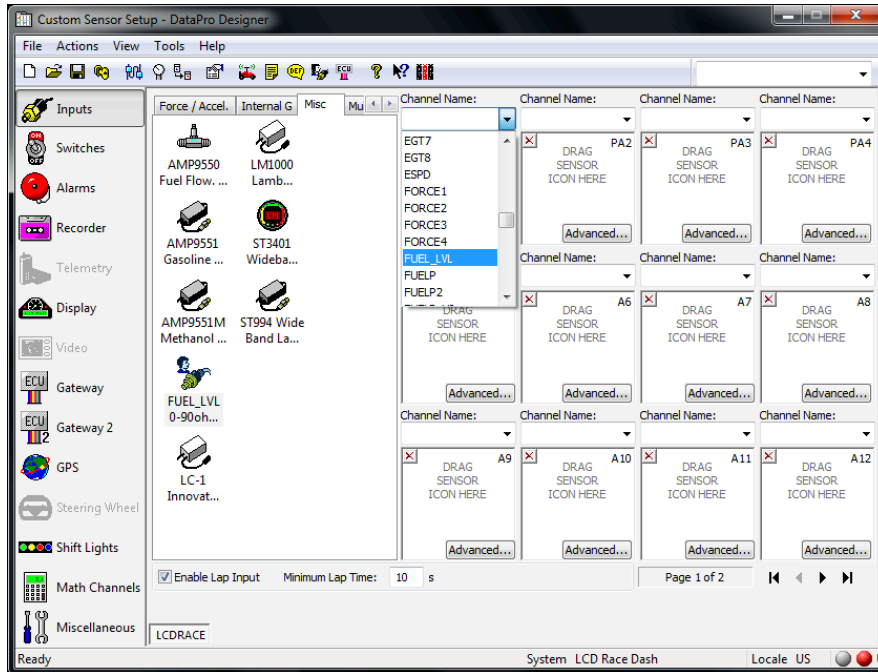


9.) After plotting all of the values for your sensor, click Ok and Close the Custom Sensor Manager.

10.) To add the custom sensor to your configuration, open the Misc sensor tab at the top of the sensor list. Drag and drop your custom sensor to the appropriate channel where the sensor is connected.



11.) Use the drop-down menu or type the Channel Name to assign the custom sensor a specific channel name.



8.) Complete your configuration and upload the configuration to your data logger.